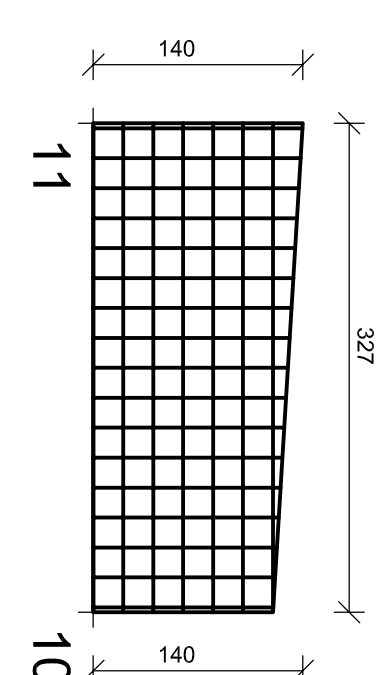
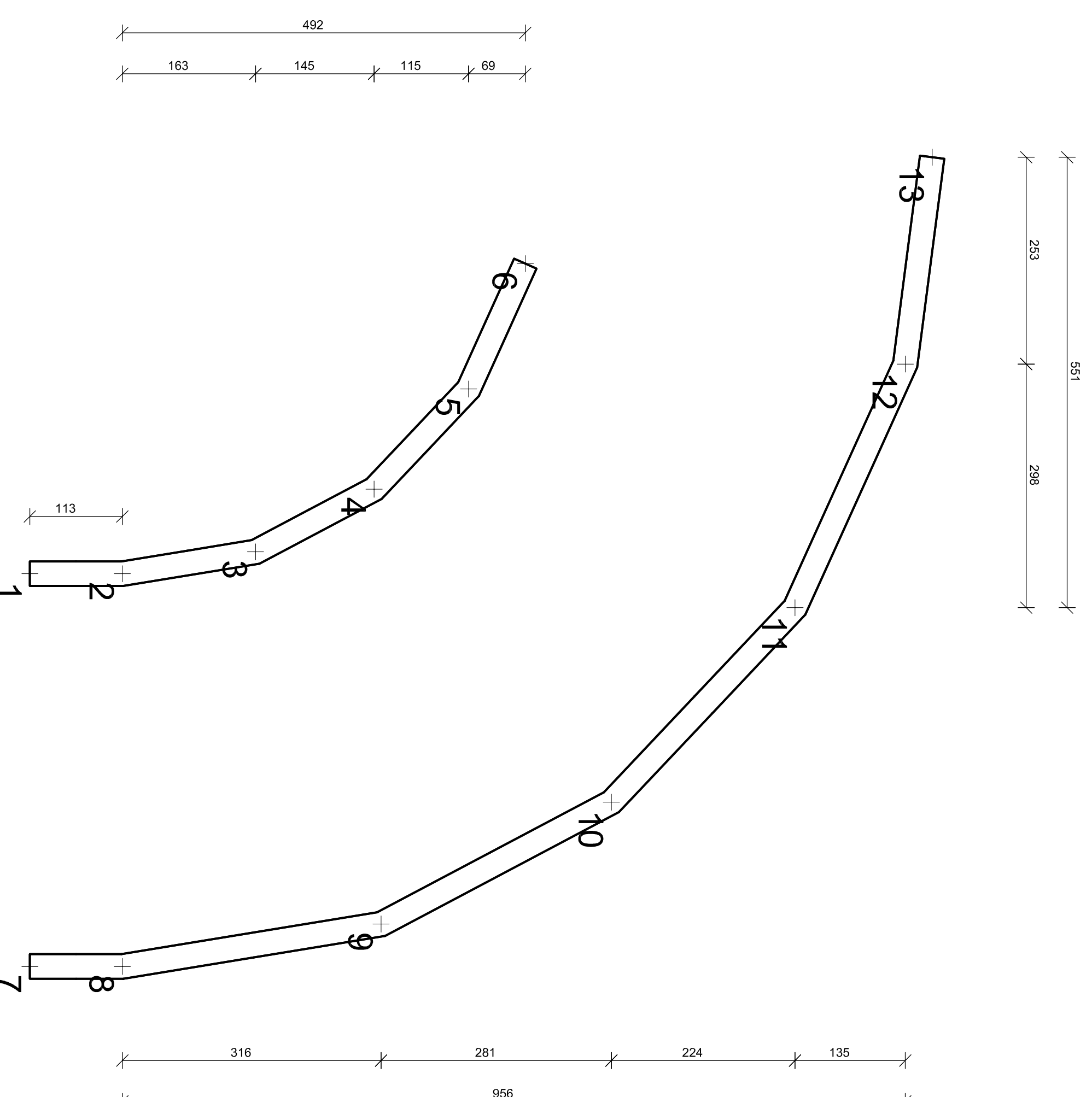
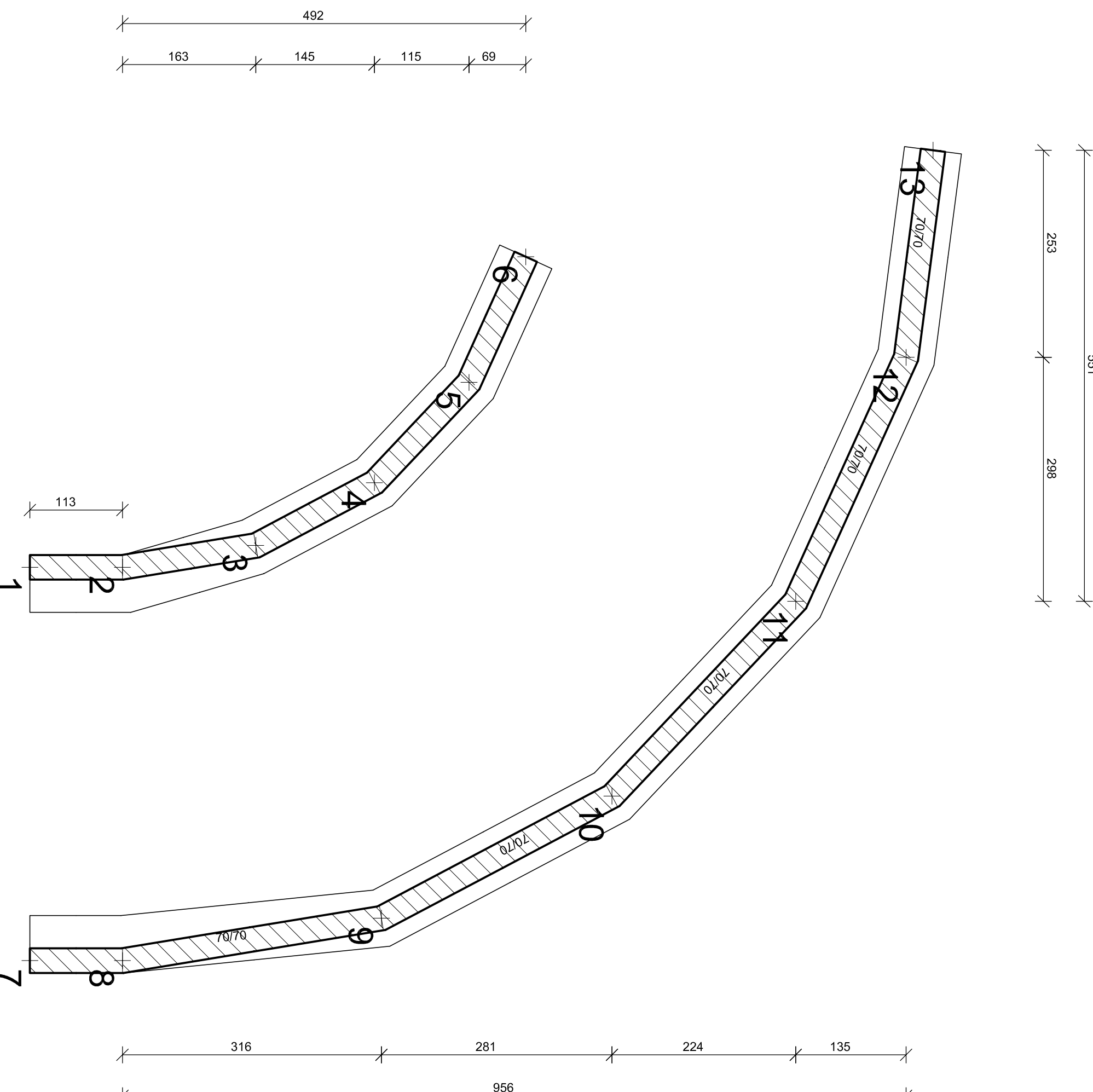
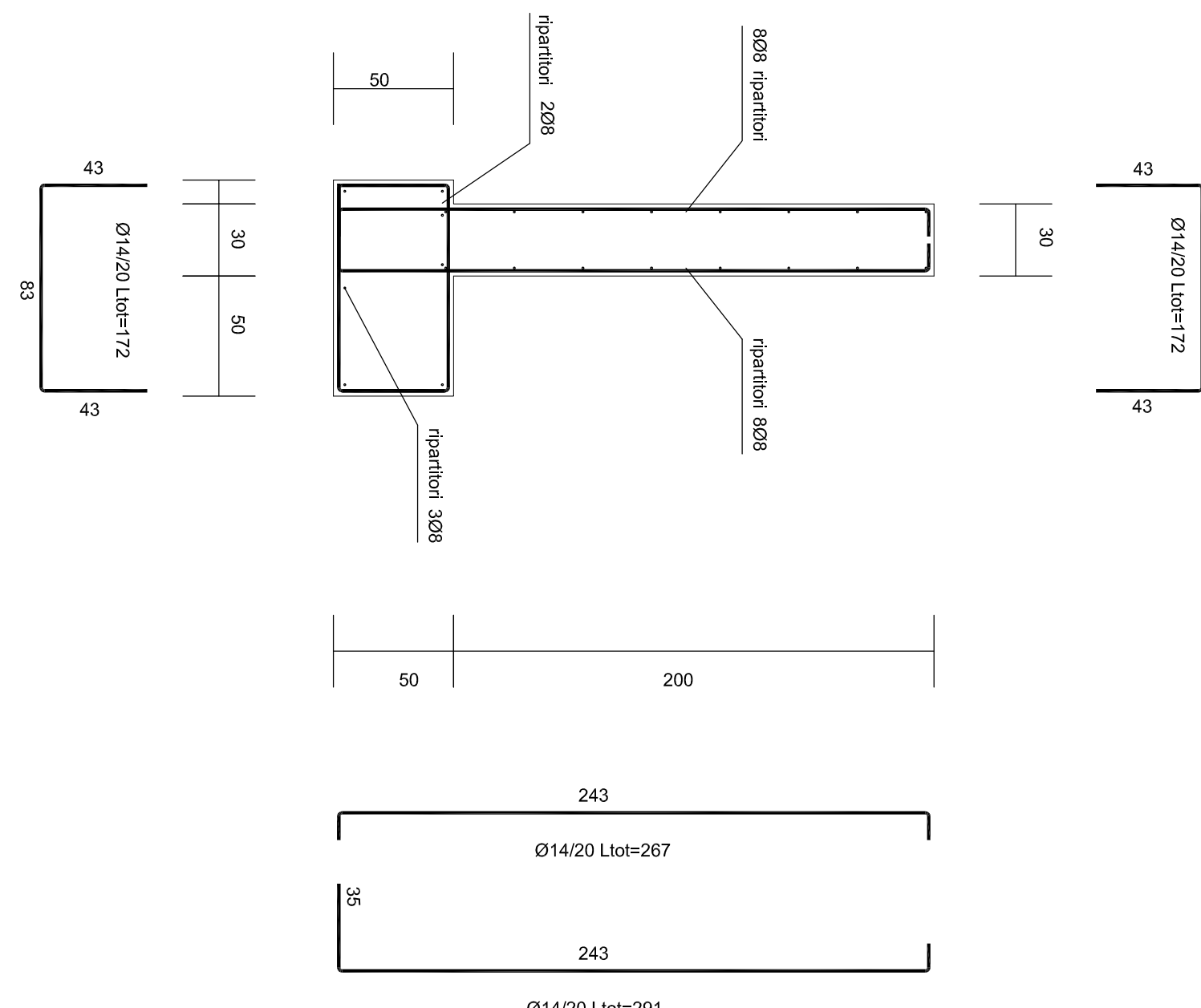
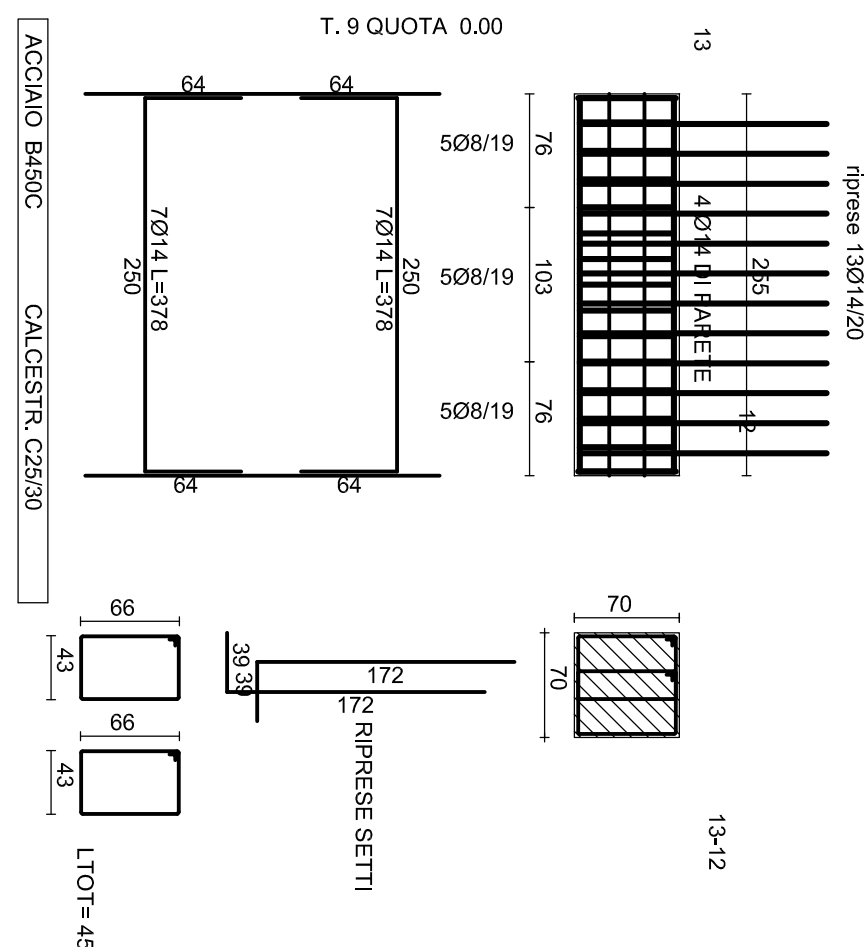
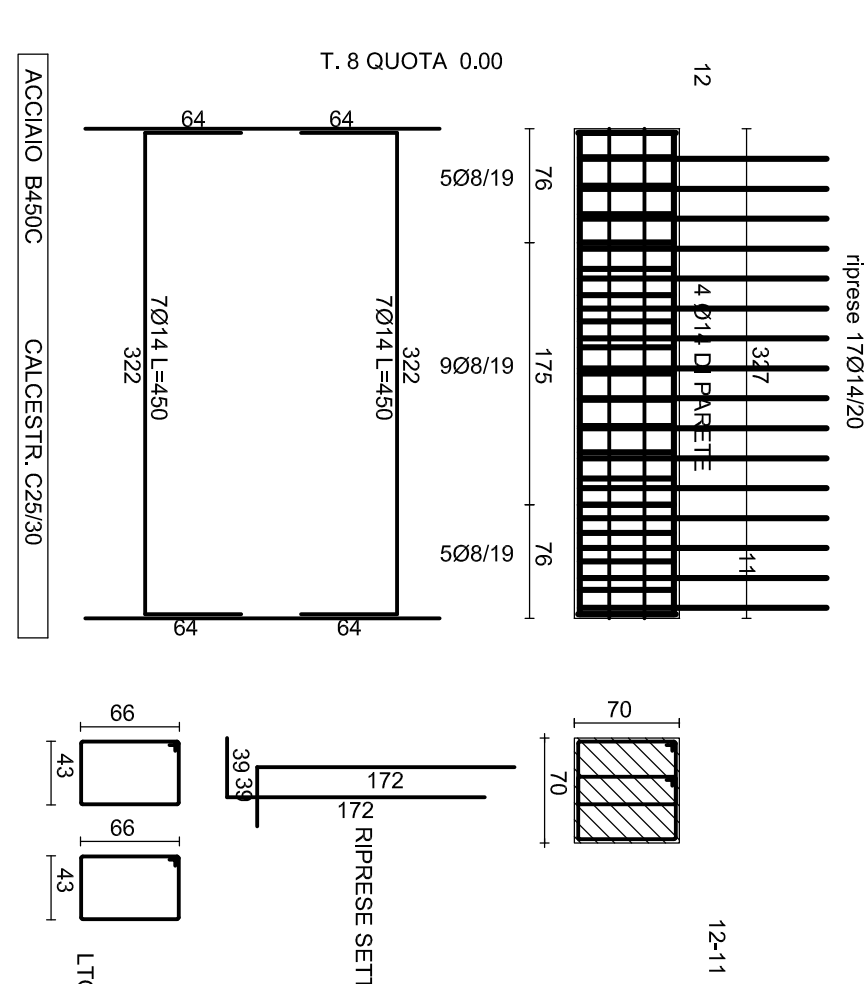
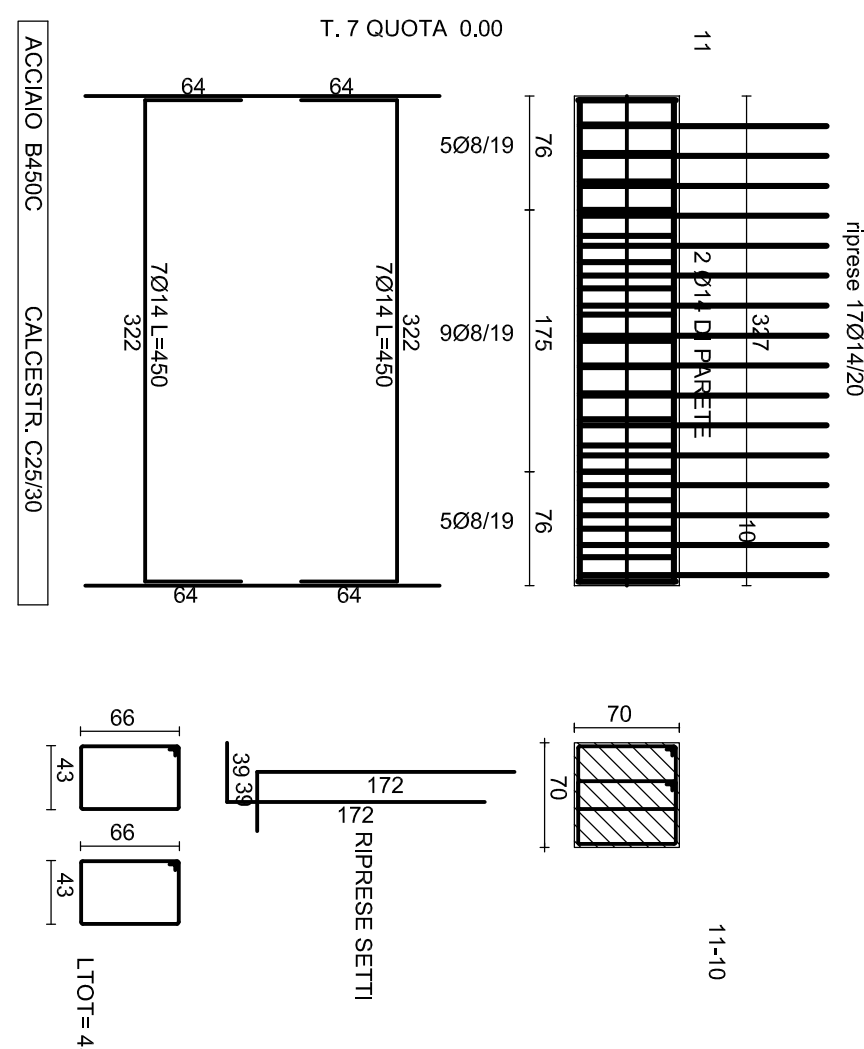
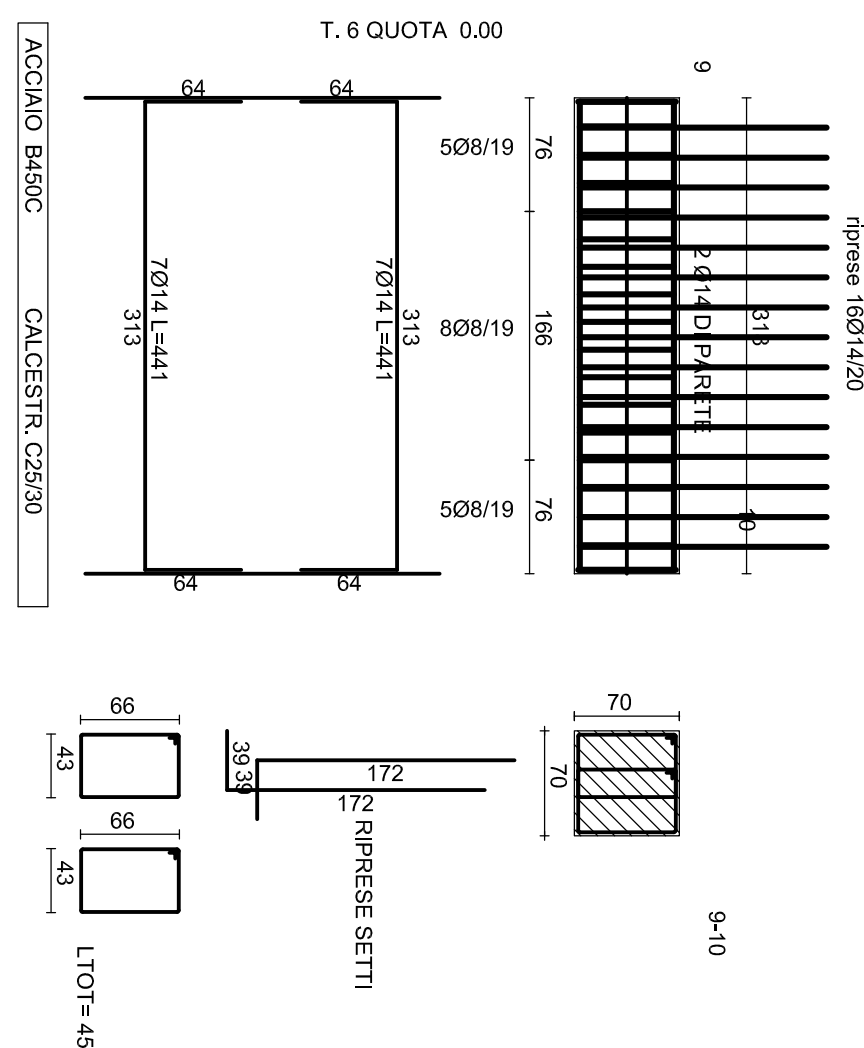
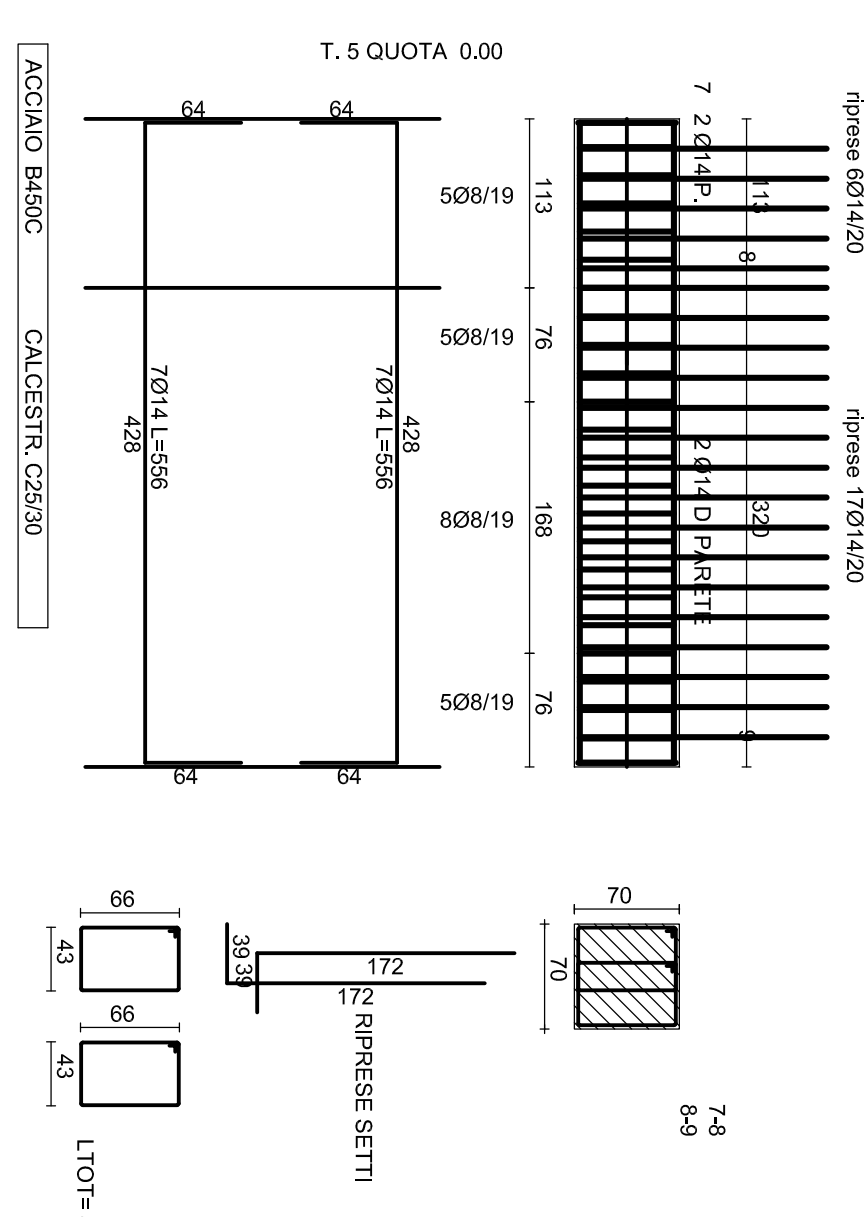
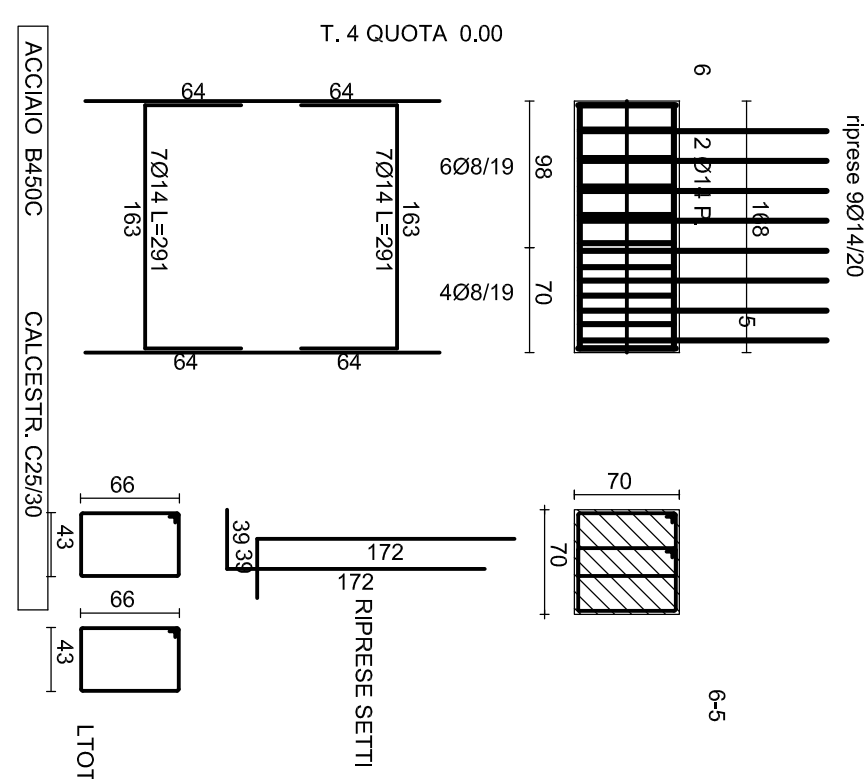
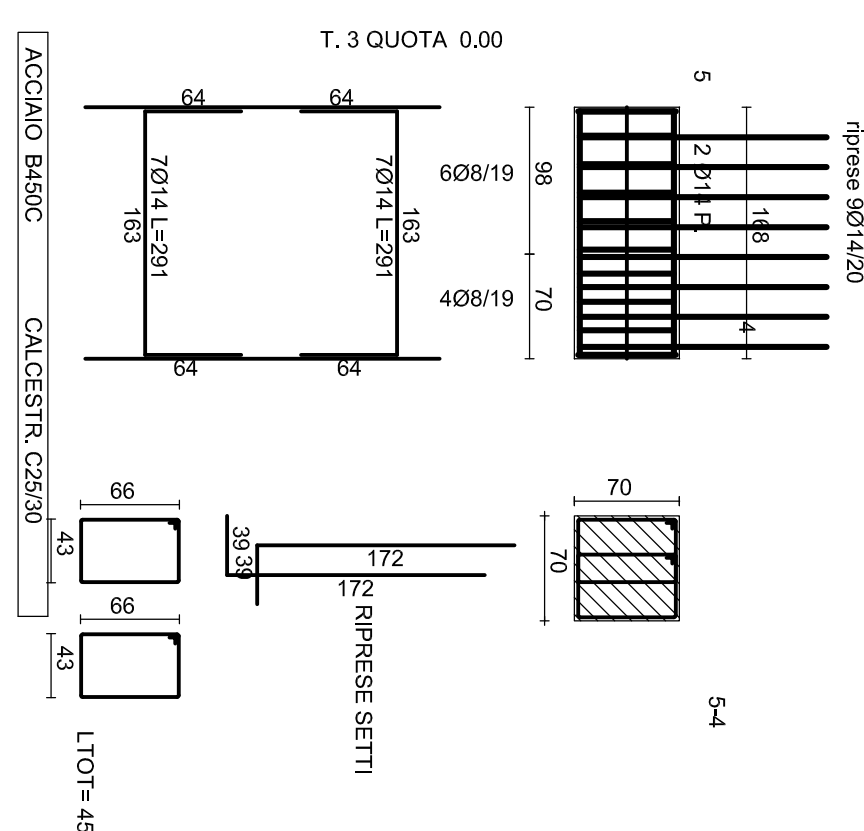
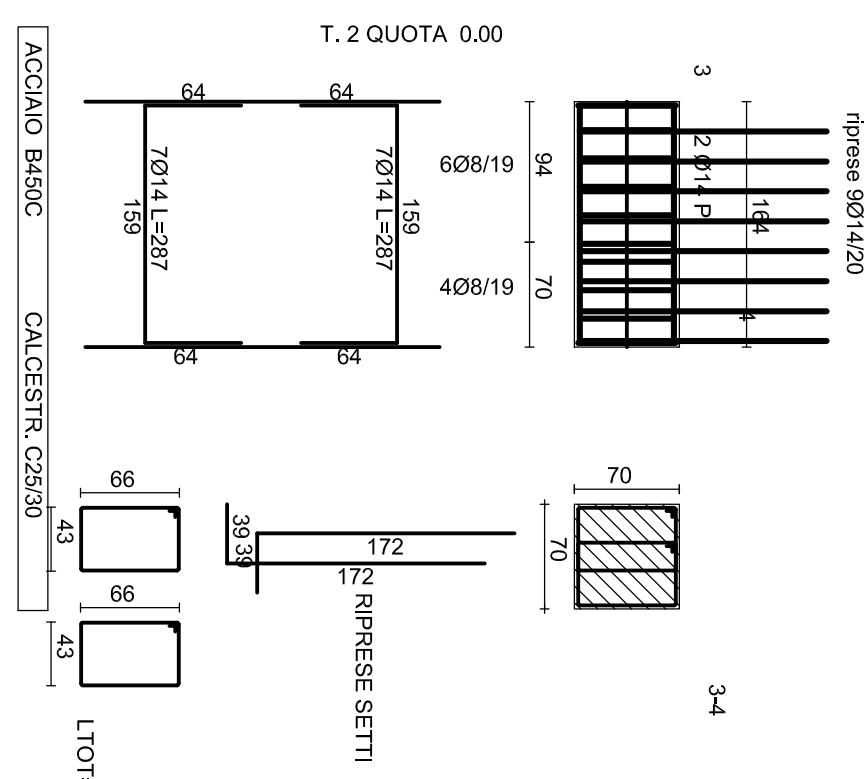
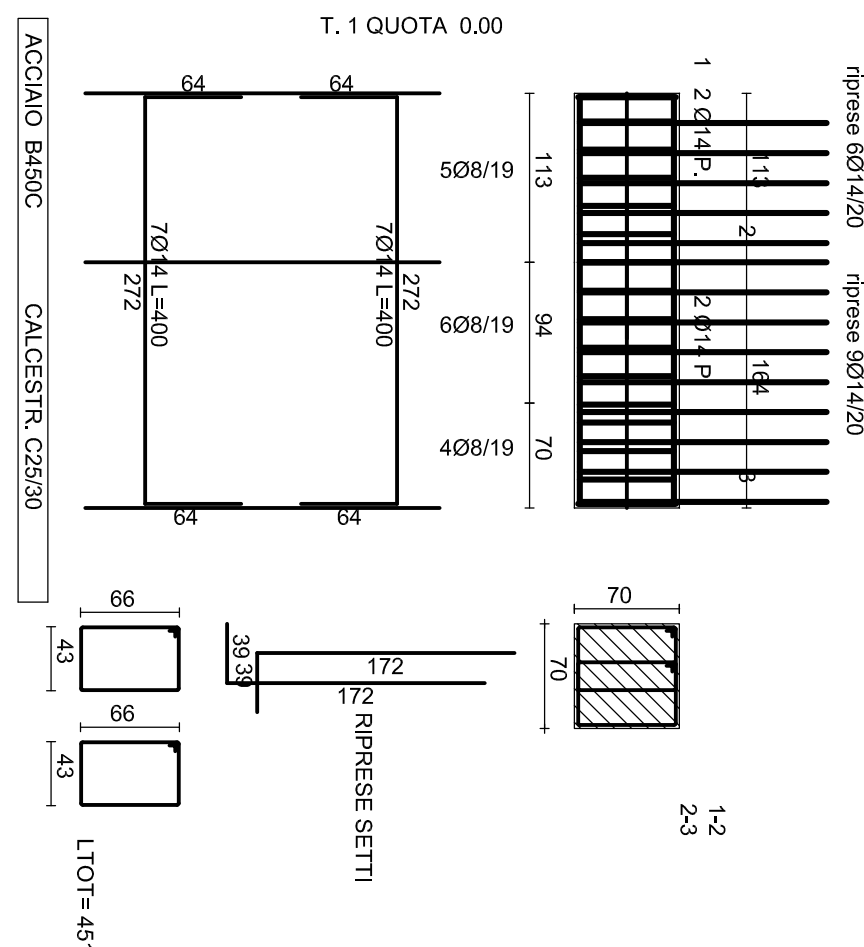


REALIZZAZIONE DI UN PARCO  
PUBBLICO A TEMA ENERGETICO  
CON ANNESSA ISOLA ECOLOGICA

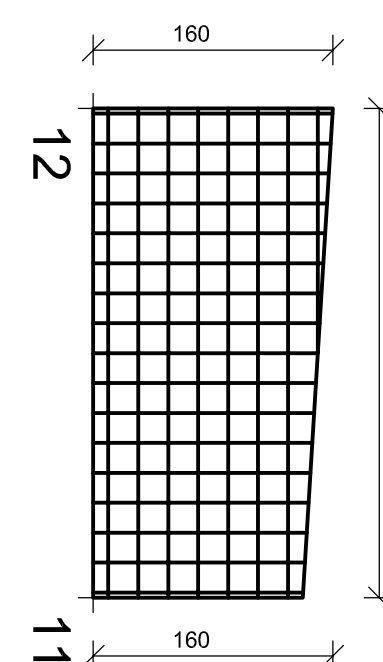
PROGETTO ESECUTIVO	SCALA GRAFICA	1/100	DATA ELABORAZIONE	Gen 2015
--------------------	---------------	-------	-------------------	----------

TAV. 16 - STRUTTURALI MURATURE RAMPANTI

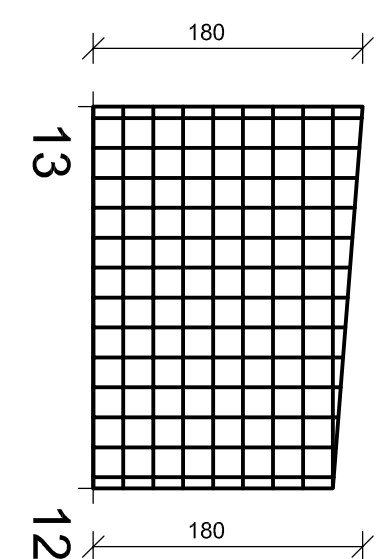
Responsabile del Proiectamento  
Ing. Aldo Arribano



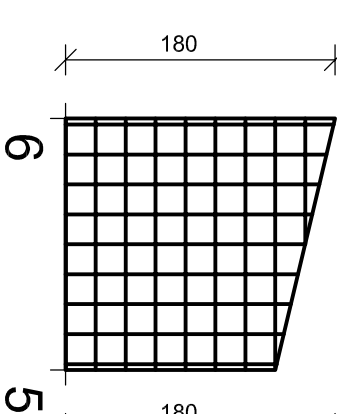
ARMATURA DI BASE SUP.=INF. SETTO 9 QUOTA m.0,00-1  
Ø 14/20 diaz.X  
Ø 14/20 diaz.y (spessore=30 cm)  
Sui bordi prevedere risvolto fermi (l=28 cm)  
ACCIAIO B450C CALCESTR. C25/30  
Prescrizione: 9 Split/Mq



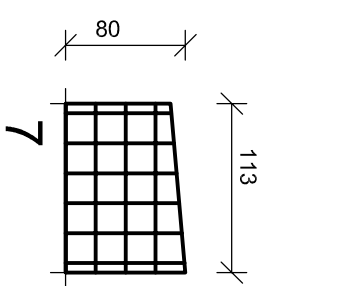
ARMATURA DI BASE SUP=INF. SETTO 10 QUOTA m.0,00-1.  
Ø 14/ 20 diaz.X  
Ø 14/ 20 diaz.y (spessore= 30 cm)  
Sui bordi prevedere rinvolio fermi (i= 28 cm)  
ACCIAIO B50C CALCESTR. C25/30  
Prescrizioni: 9 Splicing



ARRIATURA DI BASE SUP-INF, SETTO 11 QUOTA 0,00-1,00  
 Ø 14/20 direz.X  
 Ø 14/20 direz.Y (spessore=30 cm)  
 Sui bordi prevedere risvolto lateri (h=28 cm)  
**LACIO BIANCO CALCESTR. CANTO**  
 Prescrizione: 9 Spallmq

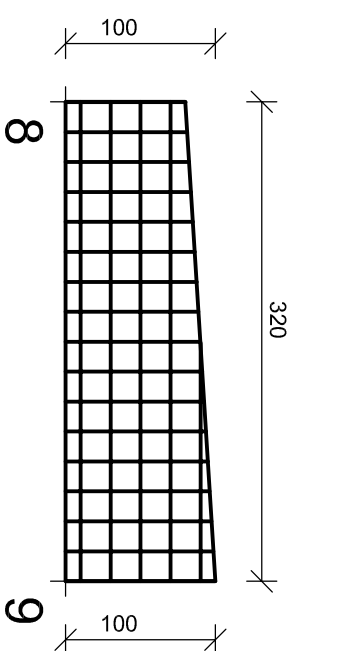


ARMATURA DI BASE SUP. 414N<sup>2</sup>, SETTO 5 QUOTA m. 0,00 - 1,00  
 Ø 14/20 direz. X  
 Ø 14/20 direz. y (spessore= 30 cm)  
 Sul boati prevedere travetto termi (h= 25 cm)  
 ACCIAIO B450C CALCESTRUZZA  
 Presa: 9 Spallina

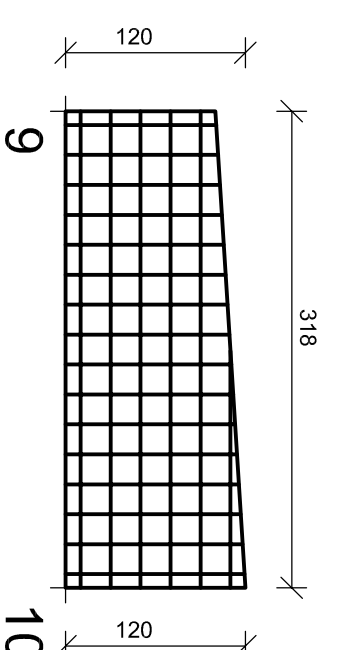


ARMATURA DI BASE S.U.P. = INF. SETTO E QUOTA m.0.00- Ø 14/ 20 cnc.X Ø 14/ 20 cnc.Y (spessore= 30 cm) Sui bordi prevedere travetti (int. = 26 cm)	ACCIAIO B40C CACCISTE C20/30
---	---------------------------------

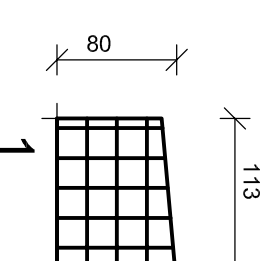
Presolone: 9 Spina



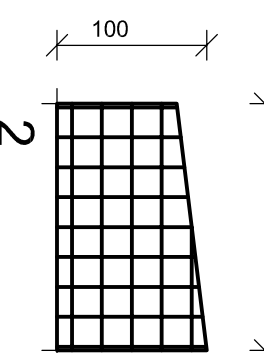
ARABATTURA DI BASE SUP.=INF.=SETTO 7 QUOTA m.0,00  
 Ø 14/ 20 diaz.X  
 Ø 14/ 20 diaz./ (spessore= 30 cm)  
 Sul bordi prevedere incollati termi (l" 26 cm)  
**ACCIAIO B450C** **CALCESTRUZZO**  
 Prescriz.: 9 Spallim



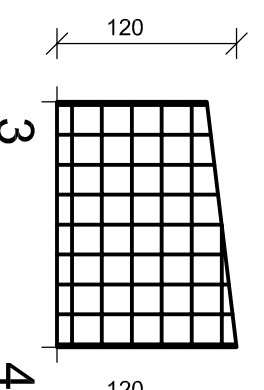
ARMATURA DI BASE SUP. = 11NF - SETTO 8 QUOTA m. 0,0	
Ø 14/20 direz. X	
Ø 14/20 direz. Y (spessore = 30 cm)	
Sul bordi prevedere riavvolto ferr. (l = 26 cm)	
ACCIAIO B450C	
Preselezioni: 9 Sull'imp.	CALCESTR. C25/30



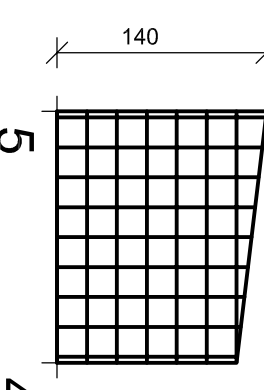
ARMATURA DI BASE SUP.=IN: SETTO 1 QUOTA m.0,00- 2  
Ø 14/20 cnc.X  
Ø 14/20 cnc.y (spessore= 30 cm)  
Sui bordi prevedere traccio (n° 26 cm)  
ACCIAIO B450C CALCESTR. C25/30  
Presistone 8 Spallina



ARMATURA DI BASE SUP. = INF. SETTO 2 QUOTA m.0,00-  
Ø 14/20 dritta X  
Ø 14/20 dritta (spessore= 30 cm)  
Sul bordi previsione rivello tanti (l= 26 cm)  
ACCIAIO B490C CALCESTRUZZA C25/30  
Presocone: 9 Sg/lt/mq



ARMATURA DI BASE SUP. INF. SETTO 3 QUOTA m.0,000  
 Ø 14/ 20 diaz X  
 Ø 14/ 20 diaz / (spessore= 30 cm)  
 Sul bordi prelevare novello semi (l= 25 cm)  
 ACCIAIO B450C CALCESTR. C25/30  
 Prescrizioni: 3 Spallmag



ARMATURA DI BASE SUP. + INF. SETTO 4 QUOTA m.0.0  
Ø 14/20 dritz X  
Ø 14/20 dritz (pressione = 30 cm)  
Su bordi prevedere travaso (int. = 26 cm)  
ACQUARO BASSO CALCESTRUZZO  
Presalzone a spatola

MURATURA LONGITUDINALE

PIANTA IMPALCATO QUOTA m: 0.00

PIANTA IMPALCATO QUOTA m: 1.80

ACCIAIO B450C	CALCESTRU. C25/30
Prestazioni: 9 Spallina	

ACCIAIO B450C	CALCESTR. C25/30
Prescrizione: 9 Spilimig	

ACCIAIO B450C	CALCESTR. C25/30
Prescrizione: 9 SpillWdg	

ACCIAIO B450C	CALCESTRU C28/30
Prescrittione: 9 Spdl/Mq	